



Modular Pontoon System

Falmouth Divers Ltd own and operate a road transportable modular interconnecting pontoon system that can be made up to pontoons of various dimensions.

Pontoon units can be joined on their side or on their ends to form widths or length to suit their application.

The pontoons can be outfitted with containers, cranes, winches and hand rails as required.

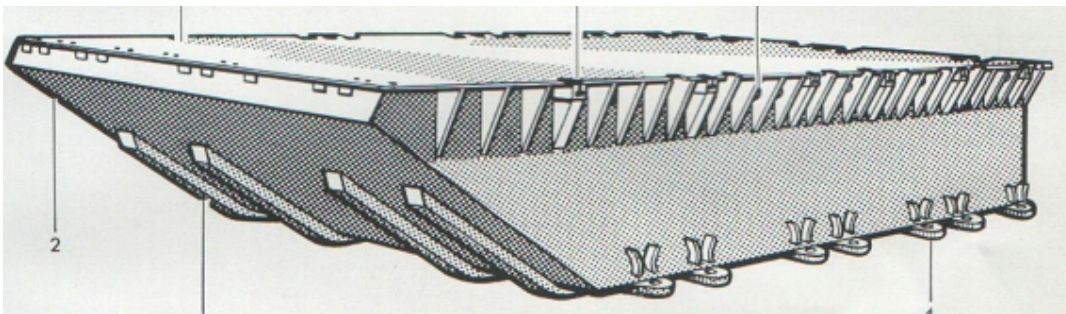
We currently hold 12 units in stock (8xE and 4xM) but can add additional units from another supplier if larger pontoons are requested.



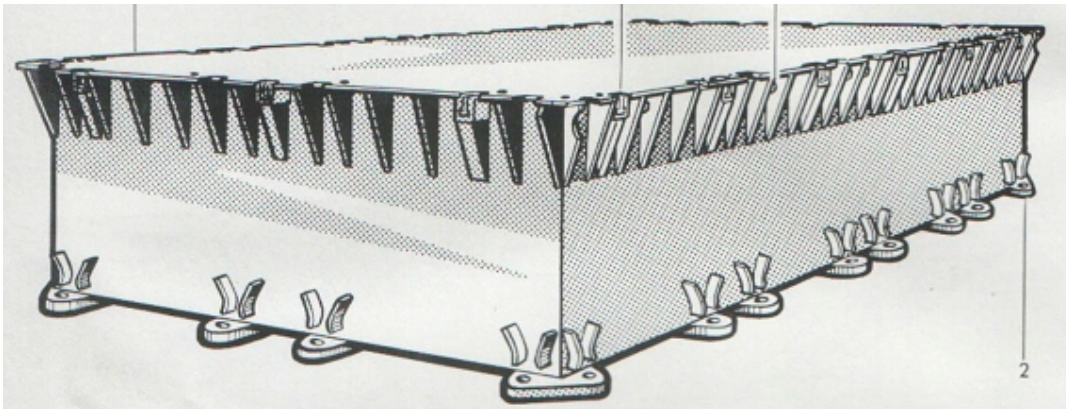


Connectable pontoons

- **Type:** "E" End section 4.75 x 2.10 x 0.73 meter
- **Weight:** 1.250 Kg
- **Max. carry:** 2.500 Kg with 25 cm freeboard (each unit)



- **Type:** "M" Midsection 4.20 x 2.10 x 0.73 meter
- **Weight:** 1.185 Kg
- **Max. carry:** 2.500 Kg with 25 cm freeboard (each unit)



Falmouth Divers Ltd
Tidal House
Commercial Road
Penryn
Cornwall
TR10 8AL

Web: www.falmouthdivers.com
e-mail: office@falmouthdivers.com
Phone: 01326 374736
Fax: 01326 377989